

DEPOSIT CHECKS

from ANYWHERE with DeposZip®



INSTRUCTIONS FOR MOBILE DEVICES

What do I need to do to use DeposZip from my mobile device?

1. If you haven't already, enroll in Internet Branch at hacu.org.
2. From your mobile device (smartphone or tablet) download the Mobile HACU app from the Google Play or AppStore.
3. Login to Internet Branch from your device. Follow the steps to download the DeposZip App.

**Be sure to always log into HACU Internet Branch to use this service.*

How do I deposit a check using Remote Deposit Capture (RDC)?

1. Endorse the back of your check with your signature, account number & write "For remote deposit only at HACU".
2. Sign in using the HACU Mobile app on your phone or tablet, click DeposZip and follow the easy prompts to submit your deposit.

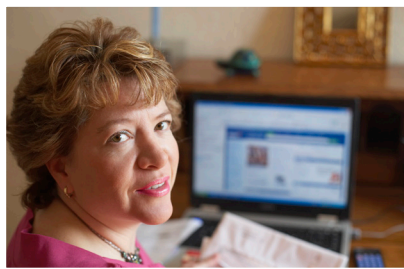
**Please note to always log into HACU Mobile app and use DeposZip from there.*



Sign up at hacu.org

 **HEALTHCARE ASSOCIATES
CREDIT UNION**

INSTRUCTIONS FOR DESKTOP COMPUTERS



What do I need to do to use DeposZip from my desktop computer?

1. If you haven't already, enroll in Internet Branch at hacu.org.
2. Login to Internet Branch from your computer. Read and accept the End User Agreement and you will receive a welcome email.

How do I deposit a check using Remote Deposit Capture (RDC)?

1. Endorse the back of your check with your signature, account number & write "for remote deposit only at HACU".
2. Login to Internet Branch and select DeposZip.
3. Follow the easy prompts to scan your check and submit your deposit.

*** DeposZip Mobile Requirements:** The DeposZip Mobile Application works with a variety of supported smartphone devices and utilizes the built-in camera for the capture of check images. The list of supported devices follows:

Apple Devices (Recommended with current version on IOS)

- iPhone 3GS or higher
- iPod Touch 4th generation or higher
- iPad 2, or higher

Android Smartphones and Tablets (Recommended with current version of Android Operating System)

Note: Devices must have a 2.0 megapixel (or greater) camera

No "Small Screen" support, i.e. all but "QVGA" 240wx320h are supported

*** DeposZip Desktop Requirements:** The DeposZip program works with the standard device drivers used for everything from desktop flatbed scanners and all-in-one devices to multi-feed duplex scanners. DeposZip supports multiple operating systems and browsers, as well as both the Java and ActiveX controls. The currently supported environments include the current version, plus one prior version, of the following environments:

Supported Operating Systems:

Windows XP, Windows Vista, Windows 7, Windows 8.
Mac 10.7.5 is supported using Load and Zero Client features only.

Supported Browsers: Internet Explorer, Firefox or Safari (for Mac only), Chrome (Windows only)

Mobile carrier charges may apply